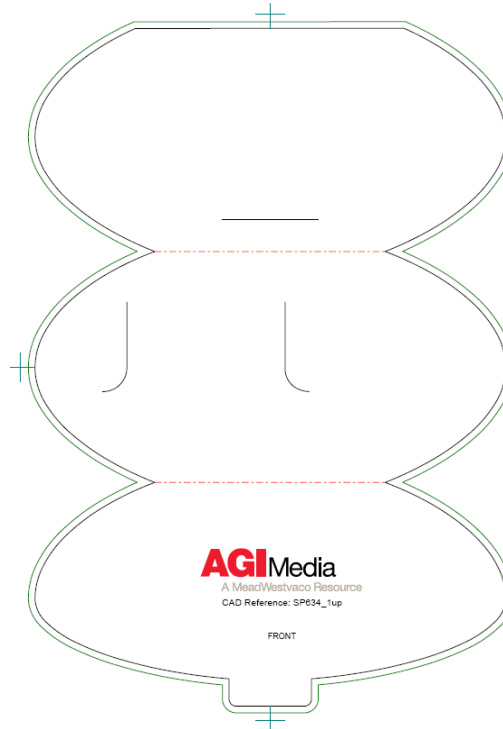
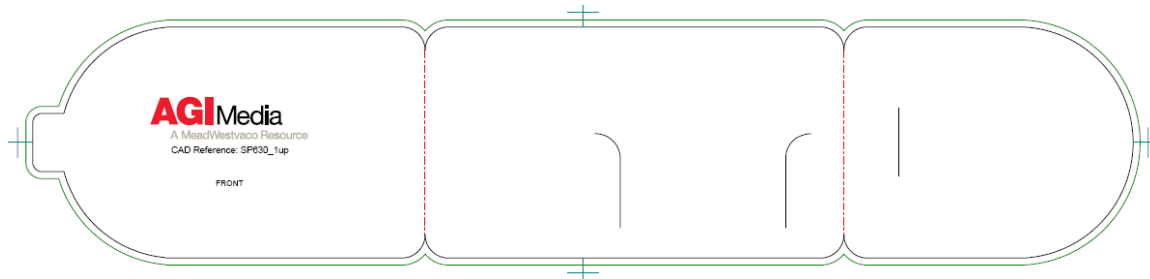


SP634 Dimensions 306mm width by 211mm height



- 📄 Print Ready High Resolution PDF's are preferable
- 📄 If illustrator files are supplied and require alteration there will be a charge
- 📄 3mm bleed area is required (Print area outside the Keyline).
- 📄 Colours should be process (CYMK)
- 📄 If Spot Colours are present PMS reference should be supplied to AGI CSR



SP630 Dimensions 472mm width by 99mm height

- 📄 Print Ready High Resolution PDF's are preferable
- 📄 If illustrator files are supplied and require alteration there will be a charge
- 📄 3mm bleed area is required (Print area outside the Keyline).
- 📄 Colours should be process (CYMK)
- 📄 If Spot Colours are present PMS reference should be supplied to AGI CSR